

0401/211(a)  
PATTERN DRAFTING PRACTICAL  
Oct./Nov. 2018  
Time: 4 hours



THE KENYA NATIONAL EXAMINATIONS COUNCIL  
ARTISAN CERTIFICATE IN GARMENT MAKING  
PATTERN DRAFTING PRACTICAL

4 hours

INSTRUCTIONS TO CANDIDATES

1. You should have the following for this examination:
  - (a) Full scale easy fitting bodice and sleeve blocks size 10;
  - (b) Tape measure;
  - (c) Metre/ square rule;
  - (d) Eraser;
  - (e) French curves;
  - (f) 2H/ HB pencils;
  - (g) Brown papers;
  - (h) Glue/ cellotape;
  - (i) Tracing wheel;
  - (j) Paper scissors.
  
2. All stages of pattern development must be shown.

This paper consists of 3 printed pages.

Candidates should check the question paper to ascertain that all the pages are printed as indicated and that no questions are missing.



## TASK

Using the bodice, sleeve blocks and the measurements provided, develop and produce final patterns for the blouse style sketched below.



### NB

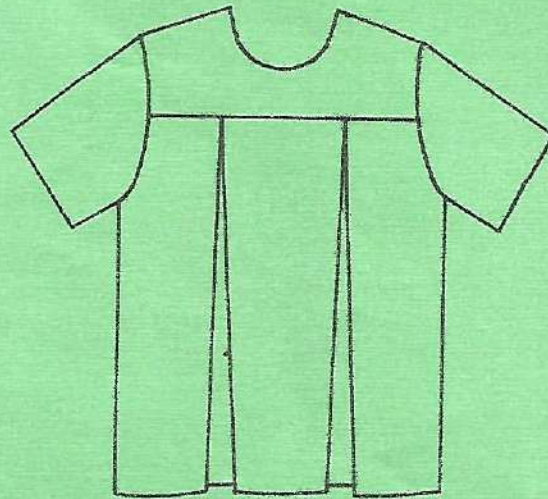
- Back facing is separate
- Omit seam allowances

### Measurements

Full length	-	55 cm
Sleeve length	-	19 cm
Pleat depth	-	4 cm

easytvvet.com





FRONT VIEW



BACK VIEW

**THIS IS THE LAST PRINTED PAGE.**